

THE POINT



Waypoint Church are collecting items for this year's Operation Christmas Child on behalf of Kiln Hill Pre-school. For children around the world, a shoebox is often their very first gift. So, it is important to make sure their gift is **FUN**, includes a special item and other quality toys, **FULL**, packed to the brim with additional school supplies and personal care items and **PERSONALISED**, contains a note and photo, which are often the child's favourite items! Following is a list of the items that are acceptable for children, who will be from 2yrs to 14yrs old. The last date for collecting gifts before they are passed on to Kiln Hill, is **Sunday 10th November**. You can drop items into the Spittal Community Centre on Sundays between 9:30am and 12:30pm, on Wednesdays between 2pm and 4pm. Or they can be collected from you if you call 07752 403409.

Items that are suitable:

Toys - cuddly toy, football and pump, toy truck/car, doll, animal figures, building blocks, skipping rope, tennis ball, yo-yo, spinning top, mini frisbee, fidget spinner, finger puppets, slinky, travel games, small musical instruments, small puzzles etc.

School Supplies – pens, pencils & sharpeners, crayons, felt tip pens, ruler, eraser, writing pads or notebook, solar calculators, geometry set, glue stick, pre-inked stampers, colouring books, watercolour paint set (solid only), safety scissors, craft kits.

Personal Care Items – comb, hairbrush, toothbrush, flannel, bar soap (packaged and/or in a container), sponge, reusable plastic containers: cup, water bottle, plate, bowl, blunt-edged utensils (Fill an empty container with non-liquid items such as sunglasses or flannel to make use of the space), non-liquid lip balm, nail clippers and file, stick deodorant, compact mirror.

Accessories and other items – hat, gloves, sunglasses, cap, T-shirt, socks, flip-flops, small backpack, handbag or drawstring bag, hair bows or clips, friendship bracelets (woven with yarn or embroidery thread), watch, wind-up torch, necklace or bracelet, stickers.

Please Do Not include these Items - toothpaste, sweets, lotions and liquids, used or damaged items, war-related items (e.g. toy guns, model soldiers, military vehicles etc.), seeds, gum, chocolate or food items, religious or political literature, medicines, aerosol cans, knives, sharp or fragile items.

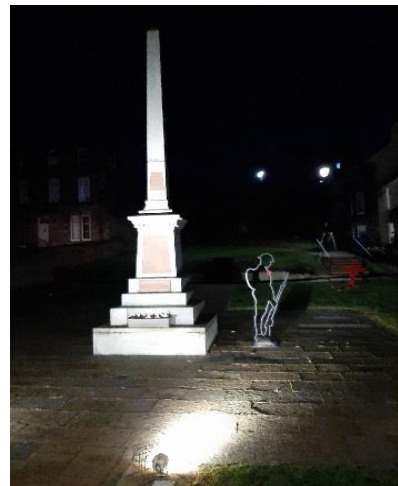
Thank you.

Remembrance Sunday Service

This year the Remembrance Service at the Spittal Spa Well will be held on Sunday 10th November at 12:30pm. In attendance will be the Mayor's Party, local groups, and of course any of yourselves that want to remember those that gave up their lives for all of us.

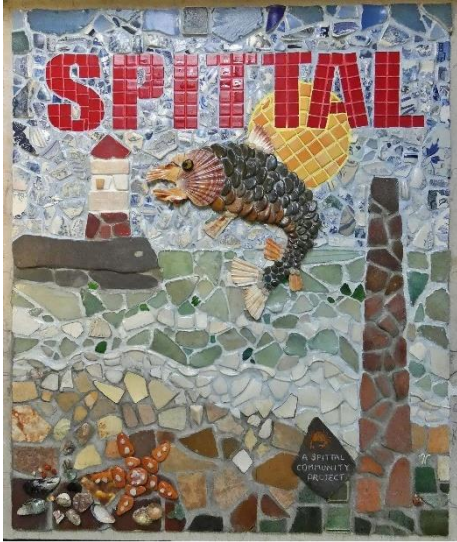


Spittal's Knit and Natter group have got their cascade of poppies out again.



Tommy is also on guard again.

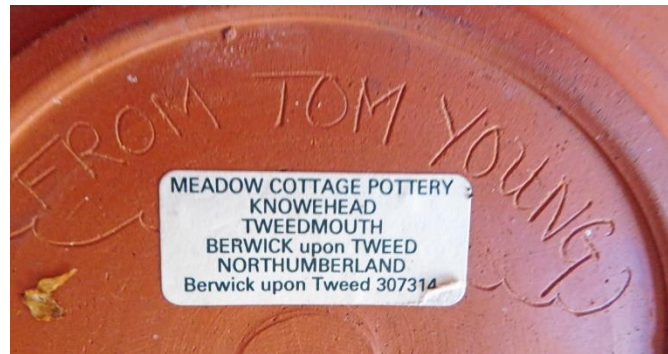
SPITTAL COMMUNITY CENTRE



Mosaic – We already have a Spittal sign on the Billendean so a team from our community decided that there should also be one on Dock Road as you come into Spittal. Whereas the Billendean sign is on a full piece of stone, they decided to make this sign as a mosaic, with pieces gathered from the main and river beaches. The project has taken some time to put together but now it is finished. As you can see, the mosaic, on the far left, is a very intricate piece of work and the community team have done a sterling job and have put in hours and hours to finish off this super artwork. Our thanks go to the two lead members of the team, Irene and Raine. All that remains now is to get the steel framework made and get into place.



We have also had another kind donation for our Mini Museum, which is in the Aidan Room. We are calling it the 'Postmaster's Plate' as it was donated to us by a family member of Bessie and Dick Dunn who ran the post office on Main Street until they retired in the 1980's.



As you can see, etched into the underside of the plate it was a gift to the Dunn's by Tom Young. The only Tom Young that the family they can think of worked for the Gas Board and he brought his money over to their Post Office on a regular basis. They said he lived in High Greens in Berwick. Perhaps if you are a relative of Tom Young from High Greens, you might be able to confirm this for us.

We were also unsure of who the potter was. It is a classic Peter Thomas piece but the address on the label did not match his current address. We got in touch with Peter, and he sent us this reply:

"Hello yes, I made it and decorated it. It was made about 35 years ago at our old workshop Meadow Cottage. I can't remember the person who requested it, I will try and find out for you. The plate was thrown on a kick wheel covered with white slip and the image scratched through. After a first biscuit (apparently this refers to any pottery that has been fired in a kiln without a ceramic glaze), the plate was painted with special colours. Glazed and fired a second time to 1130 degrees centigrade."



There is a collection jar for used stamps in the Aidan Room in aid of BARK. If you would like to donate your used stamps, or your Christmas cards (after Christmas of course!), please drop them into the post box to the right of the main door on the Main Street entrance to the Community Centre. You can also put them in an envelope and through the door of either number 17 or 84 Main Street.

Thank you.

YOU ARE INVITED TO A SPECIAL EVENT ORGANISED BY THE
'HILDA HOUSE COMMUNITY'



Saturday 9th November 2024
11.00-3.00

Spittal Community Centre TD15 1QY
(next door to 'Hilda House')

Launch of 'Hilda House Community' and Book Launch
'Theology and Flourishing'

Essays in honour of Elizabeth Baxter: published by Sacristy Press 2024 editor: The Revd Professor Helen Leathard
(A unique gift from Holy Rood House, Thirsk)

Refreshments and light lunch provided. Copies of the book, and information about the Community will be available. All are welcome to this celebratory event.

For more information and booking please contact: elizabethbaxter@gmx.co.uk



A new play, 'Previously Loved' by local writer Jackie Kaines Lang, will be on in the Spittal Community Centre on Saturday 30th November.

Jackie it's a lighthearted look at an eccentric group of charity shop volunteers, their relationships with each other and with the charity they serve – and what happens when both the charity and its founder are under threat. I volunteered in a charity shop a few years ago and was fascinated by the reasons people volunteer, the way volunteers support each other, and what winds them up! The work is inspired by the lovely people I worked with, but the characters and story are fictitious.

'Previously Loved' is presented by Ragbag Theatre Company which produced Jackie's 2024 play 'To Get to the Other Side' which had a sell-out run at The Maltings Theatre, Berwick. Other Ragbag credits include 'Cheshire Cats' and 'Under the Stones'.

Director Cheryl Stewart says: 'Who doesn't love a charity shop? And, like everybody, the volunteers who work in them have personal dramas and stories to tell. Jackie's play draws you into the unravelling of various characters and the personal growth of others. The play is funny and poignant and full of ordinary people being taxed further than you would expect. Be prepared for tears and tantrums. Will Hamish's kilt stay on? Will Reg own up to his lie? Will Rosa quit her habit? You will

have to come and spend time with the people who work in Previously Loved to find out. I can't wait to see it up and running'

Tickets available in-person and online via Eventbrite (Ragbag Theatre Company). There will be a collection for HospiceCare North Northumberland at the show.

Seated Tai Chi

Tai Chi, a traditional Chinese martial art, has gained popularity worldwide for its numerous health benefits and graceful movements. At the heart of Tai Chi is the role of a master instructor known as a Sifu. Currently there are two Tai Chi classes on a Friday in the Spittal Community Hall on Middle Street. The two existing classes are both standing Tai Chi, but at different levels of confidence.

As Tai Chi is a gentle, low-impact form of exercise, the Sifu, better known to us as Pete Barnes, is considering having a seated Tai Chi for those who have less mobility and are less able to stand for long periods or are unable to stand at all.

Pete is thinking of starting this new class in January. This would depend though on how many people sign up to this. If you are interested in joining this class, or if you know anybody who might be interested, please email Pete at: berwicktaichi@gmail.com.



GREENER BERWICK REPAIR CAFE
BIKE REPAIR



WORKSHOP

Bike Surgery Sat 23 Nov 1-4 pm

3 x 1 hour time slots

Spittal Community Centre

Bike repairs for adults, and advice,
from Tim Astley (ex Berwick Cycles)

Bring your bike along, take your turn,
and while you wait watch Tim with
other's bikes, and chat with other cyclists.

**For more info, and to book (*essential*)
contact:**

repaircafe@greenerberwick.org.uk

YOUR DECEMBER

DIARY DATES

7TH Dec.

Spittal Christmas Coffee Morning
10am to 12pm in the Community
Hall, Middle Street.

8th Dec.

**Berwick Concert Band's Christmas
Concert**
3pm in St John's Church, Spittal.

20th Dec.

Fool's Gold's Christmas Show
7:30pm in Spittal Community
Centre.

21st Dec.

Table Top Sale
10am to 1pm in the Community
Hall, Middle Street.

22nd Dec.

**Waypoint Church Family
Candlelight Service.**
4pm in Spittal Community Centre.



SIT Contacts:

Chair: Mau Watkins – 01289 330500
mrswatkins2@hotmail.co.uk

Secretary: Mike Greener – 07752 403409
mikegreener84@gmail.com

Website: www.spittal.org.uk

**If you, or someone you know, would like to receive 'THE POINT' monthly by email let us know by
emailing mikegreener84@gmail.com.**

**To avoid disappointment, please note that the deadline for the December 2024
issue is November 18th.**

Printed in Spittal
by

shiel  morrison printers

Follow us on:

